

2022 IMPACT REPORT

paths.utah.edu





PATHS at the University of Utah provides underrepresented and first-generation students the resources to **graduate** high school and confidence to succeed in **college** or attain a meaningful **career**.

BUILDING FUTURES



PATHS supports underrepresented and first-generation high school students from their first day of 9th grade to their first day of college. We create a learning environment that equips students to be academically successful and socially resilient.

Success in education is more than just good grades; success means being prepared academically and socially, developing a cultural identity, and cultivating a sense of belonging within the wider community. An interconnected pathway between institutions of higher education, communities, school districts, and college bridge programs is vital for success.

“

They really cared when it came to our education, I loved how we'd meet up to finish homework together.

-Sarah, class of 2022

IMPACTS

45% RETENTION RATE

86% CONFIRMED HIGH SCHOOL GRADUATES

100% GAINED COLLEGE ACCEPTANCE

\$380K IN SCHOLARSHIPS DISTRIBUTED

37 COLLEGE APPLICATIONS COMPLETED

6 ATTENDING UNIVERSITY OF UTAH

6 FULL RIDE SCHOLARSHIPS

4 ATTENDING OTHER INSTITUTIONS IN THE STATE

1 ATTENDING OUT-OF-STATE SCHOOLS

OUR WORK



PATHS Students

- GRADUATE HIGH SCHOOL AND ARE PREPARED FOR COLLEGE
- DISCOVER THEIR STRENGTHS AND PERSONAL EXPERIENCES FOR SUCCESS
- GAIN A SENSE OF BELONGING AND CONNECTIONS WITH OTHER PATHS STUDENTS
- DEVELOP COLLEGE-READY SOCIAL AND COMMUNICATION SKILLS
- RECEIVE FACULTY, STUDENT, AND PEER MENTORING
- ATTEND ACADEMIC WORKSHOPS AND LEARN STUDY TECHNIQUES



Community

- HIGHER GRADUATION RATES OF LOW-INCOME STUDENTS
- MORE FIRST-GENERATION STUDENTS ACCESSING HIGHER EDUCATION
- INCREASE EARNING POTENTIAL OF LOW-INCOME FAMILIES
- GENERATIONAL EFFECT: SIBLINGS AND OTHER FAMILY MEMBERS ATTEND COLLEGE



University of Utah Campus

- MORE ACCESSIBLE TO UNDERREPRESENTED COMMUNITIES
- INCREASING DIVERSITY OF STUDENT POPULATION CONTRIBUTING TO A RICHER CAMPUS CLIMATE
- UTILIZING ESTABLISHED CAMPUS RESOURCES
- REPRESENTATION OF UNIVERSITY OF UTAH IN WESTSIDE COMMUNITIES



“

PATHS was my connection to college and really motivated me into attending college. PATHS helped me understand the importance of college and how important to my community it is.

-Marjella, class of 2022

OUR STUDENTS

PATHS students come from historically underrepresented and marginalized communities all over Salt Lake County.

Current Students Statistics

RACE/ETHNICITY	%
American Indian or Alaskan Native	13%
Asian or Pacific Islander	4%
Black or African American	2%
Caucasian	2%
Hispanic or Latino	64%
Multicultural	15%

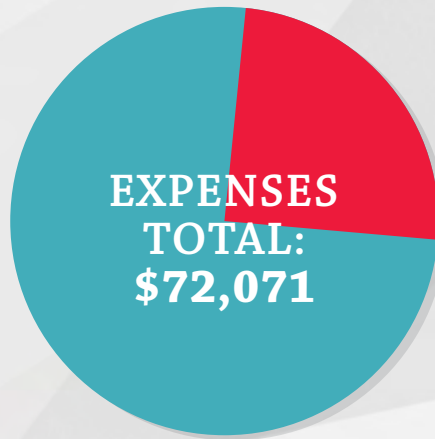
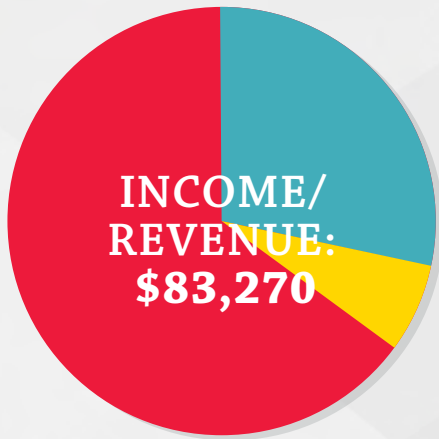
PATHS Students Attend:

SALT LAKE VALLEY

- SALT LAKE CENTER FOR SCIENCE EDUCATION
- WEST HIGH SCHOOL
- EAST HIGH SCHOOL
- EAST HOLLYWOOD HIGH SCHOOL
- MANA ACADEMY
- GRANGER HIGH SCHOOL
- HUNTER HIGH SCHOOL
- TAYLORSVILLE HIGH SCHOOL
- SKYLINE HIGH SCHOOL
- COTTONWOOD HIGH SCHOOL
- ACADEMY FOR MATH, ENGINEERING, AND SCIENCE
- HILLCREST HIGH SCHOOL
- COPPER HILLS HIGH SCHOOL
- ITINERIS HIGH SCHOOL
- JORDAN HIGH SCHOOL
- BINGHAM HIGH SCHOOL

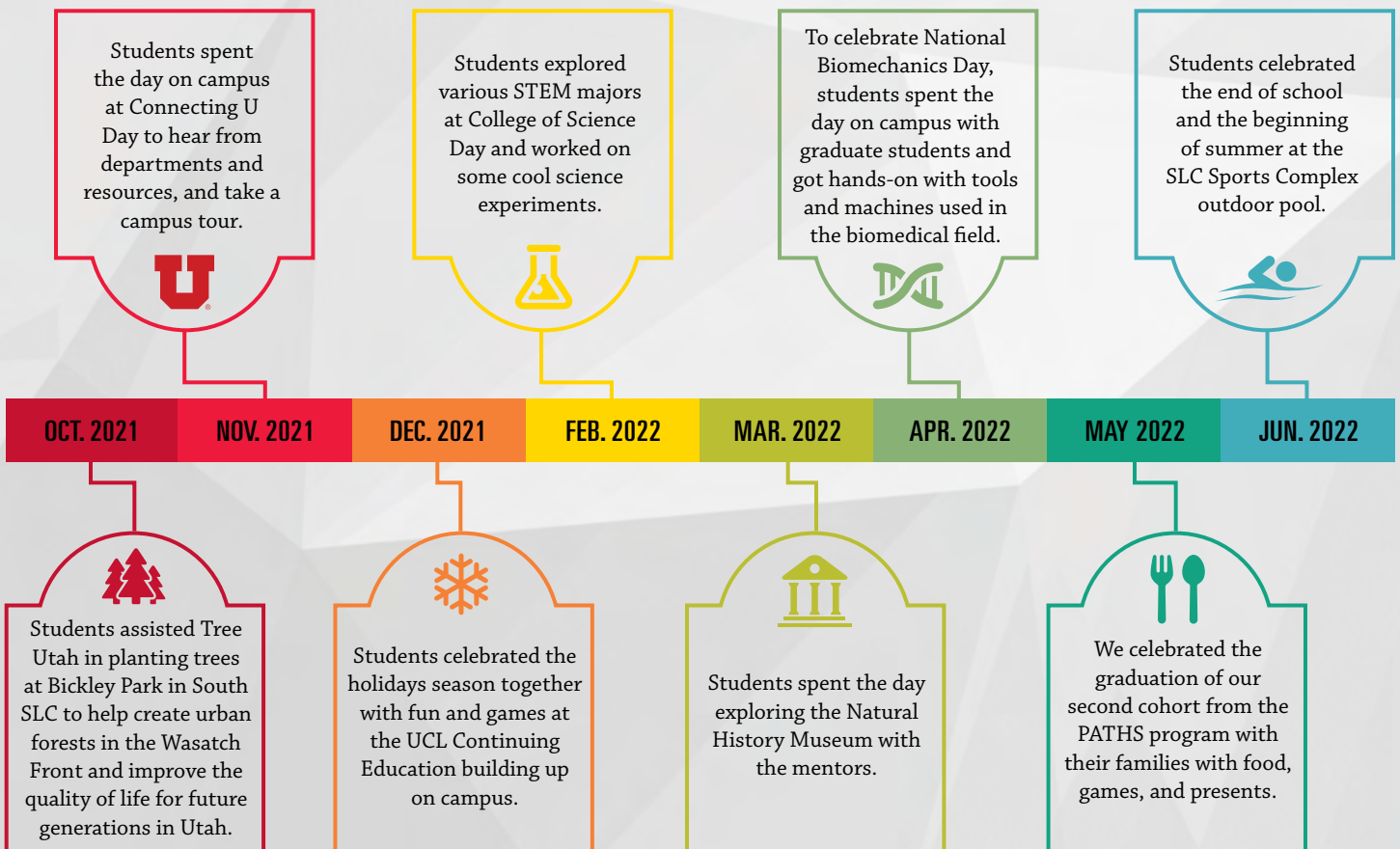
FINANCES

PATHS was able to raise \$16,182 from Parents Club donations and other fundraising campaigns this past year. However, it takes \$20,000 to support a cohort of 25 students in the PATHS program plus administration costs.



■ UNIVERSITY OF UTAH
■ PARENTS CLUB
■ OTHER DONATIONS

■ ADMINISTRATION
■ PROGRAM



WHAT'S NEXT

Summer 2023 will potentially double the cohort size to 50 more students joining our learning community.



“

PATHS has helped me worry less about the future by introducing campus help, resources, majors, campus life, etc. Now that I'm actually going to attend the U, I don't feel like I have to worry about getting lost.

-Ashley, class of 2022

“PATHS IMPACTED MY LIFE IN HIGH SCHOOL PERSONALLY AND ACADEMICALLY. IT WAS WITH OTHER KIDS WHO ARE NOW MY FRIENDS TILL THIS VERY DAY. PATHS ALSO HELPED AND GUIDED ME TO THAT ROAD OF SUCCESS.”





"I felt prepared for university after high school. I was introduced to a lot of programs and opportunities I never considered. It really made me think about what I wanted out of my future and how I could go about that. It definitely helped that I was acquainted with the campus itself because of the camps/activities. Also having monthly check-ins made me feel motivated to finish my personal goals and keep me accountable."

-Angie, class of 2022



AS A SPACE WHERE I CAME OUT OF MY COMFORT/SHY ZONE AND CONNECTED
HELPED ME IN WAYS THAT KEPT ME MOTIVATED THROUGHOUT MY SCHOOL WORK

-Lama, class of 2022

"Going into high school I felt more prepared for everything that actually came my way, and therefore when I did face adversities I could manage much better. PATHS gave me the tools and direction to run and chase my dreams."

-Julliann, class of 2022



“PATHS made me feel more comfortable in an educational setting and had a good sense of community. Many folks (mentors, students, and Liz (love her!!!)) in the PATHS program were very supportive and the students were kind to each other.

This was super important during my junior and senior year. I was stressed out and with the pandemic and the continuous oppression of communities, was so restless and sad. PATHS being there was such a motivating light to keep going, because they invested their time and resources in me, and I shouldn't let the folks who have helped me from the beginning down. I'm so dramatic LOL, but it helped me loads.

I would say that since I was more of a shy person, I couldn't really engage with the other students outside from the friend group. I wish we had more activities that were about team bonding and forcing us (LOL) to talk with each other. But that's just me.”

-Manette, class of 2022



THANK YOU

PATHS PARTNERS AND COLLABORATORS

**Book Arts Program –
Marriott Library**

**Loveland Living Planet
Aquarium**

College of Engineering

Natural History Museum

**College of Fine Arts -
ArtsBridge America**

**School of Biological
Sciences**

**College of Mines & Earth
Sciences**

Tree Utah

College of Science

**Undergraduate Studies –
Office of Engagement**

**Department of
Biomedical Engineering**

**University Neighborhood
Partners**

Financial Wellness Center

**University of Utah
Admissions**

**Huntsman Mental Health
Institute**



**WE CAN DO SO MUCH MORE TOGETHER. YOU CAN
EMPOWER OUR YOUTH TO RECOGNIZE THEIR POTENTIAL
AND THEIR OWN PATH TO SUCCESS.**

Partner

Make an impact on youth by designing an enriching educational experience or create an opportunity for students to explore career opportunities within your organization. Share valuable expertise and knowledge with the next generation to guide them on their personal journeys to success.

Mentor

Form supportive, lasting relationships with PATHS students and be a role model to high school students. Be a leader and work with PATHS.

Donate

Provide opportunities for students to attend our PATHS program, as well as scholarships for our ACT courses. Equip underrepresented and first-generation students to be academically and socially successful.

Connect

Stay up to date by liking our Facebook page and following us on Instagram @pathsuofu.



continue.utah.edu/paths | 801.587.9025 | paths@utah.edu